

**ENVIRONMENTAL IMPACT ASSESSMENT (EIA) FOR THE PROPOSED
DEVELOPMENT OF CASSAVA PROCESSING PLANT AT ACHABO
COMMUNITY IN KOTON KARFE LOCAL GOVERNMENT AREA OF
KOGI STATE
PROPOSED BY
CREST AGRO PRODUCTS (CAP) LIMITED.**

Background Information Document (BID)

This Background Information Document (BID) provides information to assist stakeholders to participate in the Environment Impact Assessment (EIA) and environmental authorization process for the proposed **development of a Cassava Processing Plant at Achabo Community in Koton Karfe Local Government Area (L.G.A.) of Kogi State, Nigeria**

What is the EIA About?

Basically, the EIA is the process of identifying, predicting, evaluating and mitigating the bio physical, social and other relevant effects of **Crest Agro Products (CAP) Limited** proposed project prior to major decisions being taken and commitments made.

In compliance with Nigeria regulatory bodies statutory provisions and in accordance to the EIA Act 86 of 1992, *the project-proponent* has commissioned Richflood International Limited, being a Nigerian based environmental consultant, to conduct an Environmental Impact Assessment (EIA) of the proposed Project at Achabo Community In Koton Karfe L.G.A. of Kogi State.

Background

Crest Agro Products (CAP) Limited is a subsidiary of CardinalStone, and an indigenous Agri-business firm incorporated (*registered with CAC*) under *the Companies and Allied Matters Act, 1990, as a private-company limited by shares*. The Company, having acquired a vast area of land (13,000

hectares) for Cassava Farming (at Apata Oworo in Lokoja), have thus proposed to set up a cassava Processing plant (factory) at Achabo community in Koto-Karfe Local Government Area of Kogi State measuring 71 hectares of land.

Project Location

The Cassava-Processing Project-Site of CAP Ltd. is located at Achabo community, along Lokoja-Abuja express (*opposite Ismah filling station*), in Koton Karfe, Kogi State, North-Central Nigeria.

The proposed project site, located on coordinates N 908128.082m and E 259106.063m, is situated on a land area of 71 hectares, acquired from the host community, Achabo.

Objectives of the EIA

The objectives of the EIA for the project site are to:

- Provide information and evidence required for developing an Environmental Impact Statement for the project site;
- Establish baseline information for the project site.
- Identify associated/potential impacts of the project in the area;
- Recommend preventive, mitigative and control measures for the identified potential/associated adverse impacts of the project; and
- Develop a cost effective Environmental Management Plan (EMP) for the lifetime of the project.

Project Overview

CAP Ltd. proposes to process primarily the Cassava-produce of her sister-company (CAP Farms Limited). The company proposes to primarily source their major raw materials locally from cassava roots being planted by the affiliated-company at a different location (a cultivated 13,000ha landmass at Apata-Oworo), as acquired from the State Government augmented by the output from farming groups under the out-growers program. The company have proposed to serve as off-takers for cassava farmers and negotiated with

cassava farmer groups, the Fadama, Cassava Growers Association and various government agencies in Kogi State.

CAP Limited has signed a Memorandum of Understanding (MoU) with 11 cluster Fadama Cassava Growers Association as part of its out growers scheme in the state.

The cassava produce is to be transported to the cassava-processing site (71ha at Achabo, Koton Karfe), where the processing plant is to be located within the proposed facility.

The plant is proposed to process 100,000 tons of harvested cassava-roots into starch per annum. The harvested cassava-roots will be processed by the proponent into food grade cassava starch.

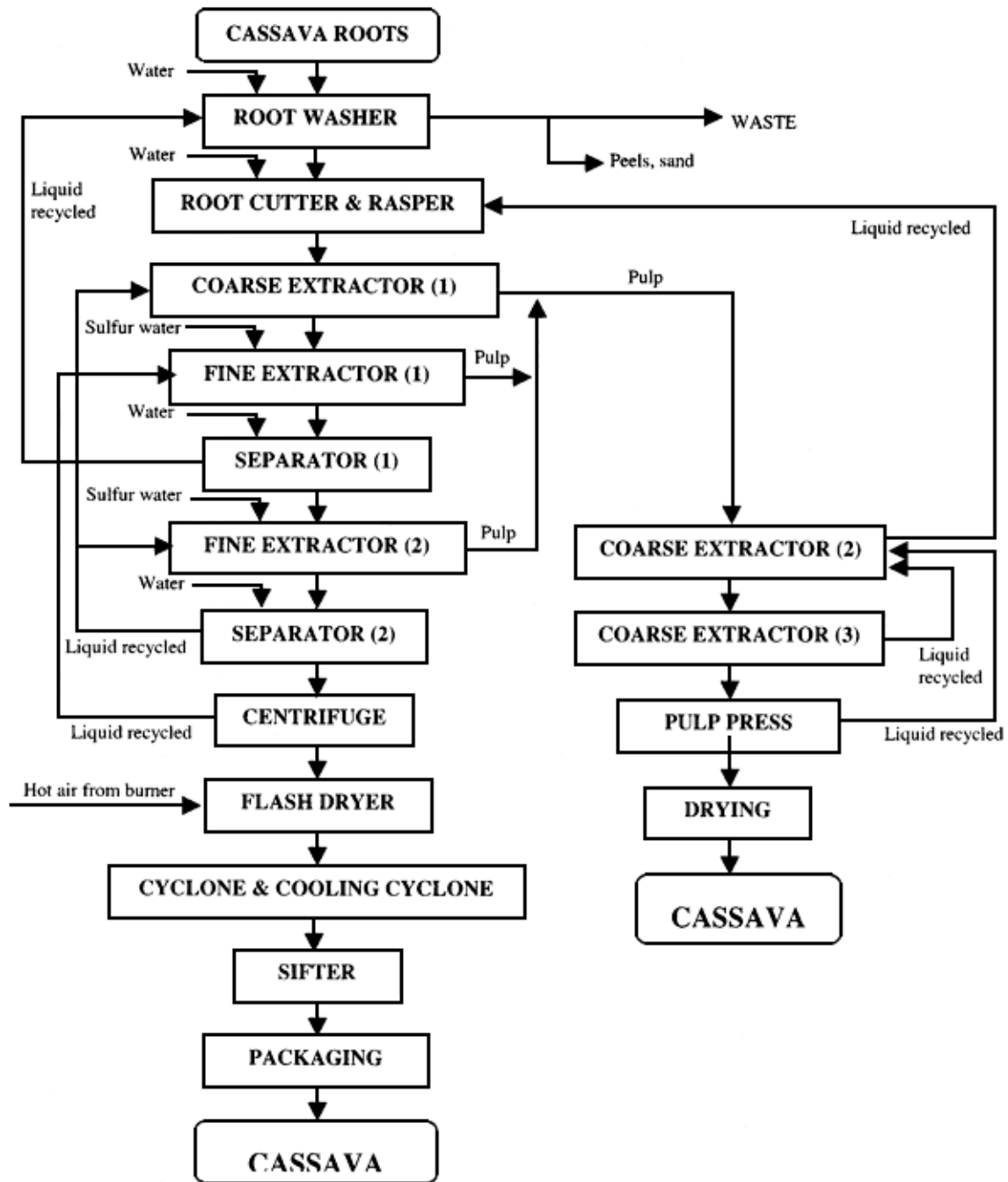
The proposed facility layout will comprise of fuel storage areas (with 3 storage tanks of about 30,000 liters each), a workshop (for the repairs of processing machineries), a warehouse (for product storage), an Utilities building housing Generators and boiler and a cassava starch processing plant among other proposed units/sections.

The factory will be equipped with modern equipment known to have the highest production efficiency. Also, all basic industrial requirements such as water, power, transportation facilities, raw materials, administrative blocks, residential quarters, clinic, and car park amongst many others will be provided adequately.

The project requires 1000m³/day of water, which will be sourced from an industrial borehole within the facility. Power supply to be used for operations at the project location will be primarily from diesel generators (>2MW in total) with gas generators and PHCN as secondary and tertiary options respectively.

The species of the Cassava to be processed is the TME-419 and TMS-3052. TME-419 cassava accounts for over 95% of the total cultivated specie to be processed.

Fig 1: A Sketch Flow diagram of the cassava-starch manufacturing process



POTENTIAL AND ASSOCIATED IMPACT ASSESSMENT

Environmental Impact Indicators

The environmental impact indicators for the study are easily observable parameters that will indicate change/deviation, which can be used to monitor the various environmental components.

The primary *Biophysical Indicators* for the on-going impact assessment are the following:

- Climate and meteorology;
- Air quality;
- Noise levels;
- Groundwater;
- Geology and geomorphology;
- Soils and soil erosion;
- Drainage patterns and flooding;
- Unique physical features; and
- Vegetation including economic trees and crops.

The primary *Socio-Economic Indicators* for the on-going impact assessment are the following:

- Land use;
- Employment and income;
- Community population and ethnicity;
- Community relations; and
- Services (e.g water and electricity supply).

Potential Benefits

- Creation of jobs and job opportunities.
- Improvement on the economic status of the stakeholder community due to increased demand for local goods and services.
- Provision of modern amenities/infrastructures.

Potential Issues

A cassava-processing factory can affect the environment by its construction and its operations. These effects or impacts can either be temporary or permanent. Below are the potential issues or impacts, which could result from Project.

- Increased demand on existing local infrastructures (housing etc.) due to influx of workers and job seekers.
- Removal of vegetation and de-stumping
- Soil erosion from temporary access road development
- Release of SO_x, NO_x, CO_x, etc from exhausts which could lead to atmospheric pollution / GHG emission.
- Increase noise levels in the area due to movement of heavy duty equipment.
- Increased demand on social infrastructure.
- Contamination from chemical /oil spills, use of fertilizer and pesticides.
- Increase Road Traffic Accident (RTA).
- Movement of workers into host communities and resultant increase in population.
- Conflicts between host communities especially youths arising from recruitment of local labour.
- Effluent management challenges.
- Due to the location of the plant it is possible that physical and economical resettlement may be required.



Call for Participation

The stakeholder engagement process is designed to conform to the Nigerian EIA Decree and international standards, including the IFC Performance Standards. Key objectives for stakeholder engagement for this project are:

1. Share information about the Project;
2. Gather local knowledge to improve understanding of the environmental and social context and understand locally-important issues;
3. Enable stakeholders to raise concerns / questions about the Project;
4. Gather responses on the EIA findings and incorporate stakeholder views into the design and management measures;

5. Respond to concerns and questions and report back on the findings of the EIA and proposed management measures;
6. Lay foundation for future stakeholder engagement.

Anyone who is interested or affected by the proposed project has a right to participate in the EIA process, and is invited to further participate in the EIA Process. Please make use of the following opportunities to be involved in the stakeholder engagement process:

- Study the information made available in this Background Information Document;
- Contact the Stakeholder Engagement Team to obtain further project information, and/or raise issues and concerns (contact details provided below);
- Attend the Stakeholder meetings to obtain further project information, interact with the Project Team, and/or raise issues and concerns. More information about the meetings will be circulated through letters, community leaders, radio announcements and through the project website.

Contact Information

Richflood International Ltd
Comfort Asokoro-Ogaji
info@richflood.com

Crest Agro Products (CAP) Ltd
Kayode Temenu
kayode.temenu@cardinalstone.com